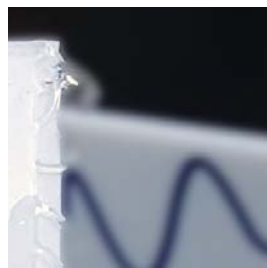
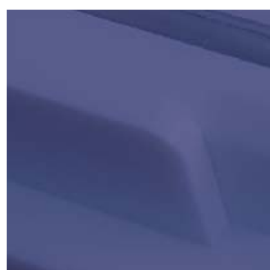


Protein Blotting Product Selection Guide

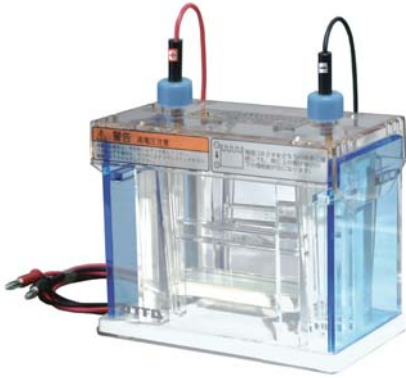


Electrophoresis
Power Supply
Transfer



Mini-Slab Size Electrophoresis System (8 x 9 cm)

WSE-1165 Mini-Slab Chamber

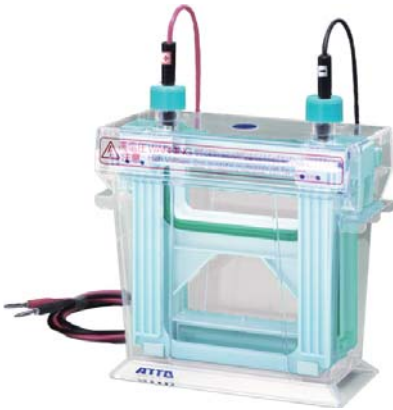


- ▷ 타사 Hand-cast gel 및 Precast gel 사용 가능
- ▷ H형 holder를 꽂기만하면 누수없이 plate 고정 완료
- ▷ 아크릴 채택으로 샘플 로딩 시 확인 용이함
- ▷ 자동 전극 스위칭 (+, -극 구분 불필요)

WSE-1165 Mini-Slab Chamber

Gel 매수	1매, 2매
Plate size	100~120 (W) × 최대 102 (H) mm, 두께 최대 7 mm
Buffer volume	450~650 mL
크기, 중량	본체 165 (W) × 98 (D) × 134 (H) mm, 0.9 kg
구성품	Main chamber × 1 (Including leads with safety cover), H holder × 2, 5 mm dummy plate × 1

AE-6530 mPAGE Chamber

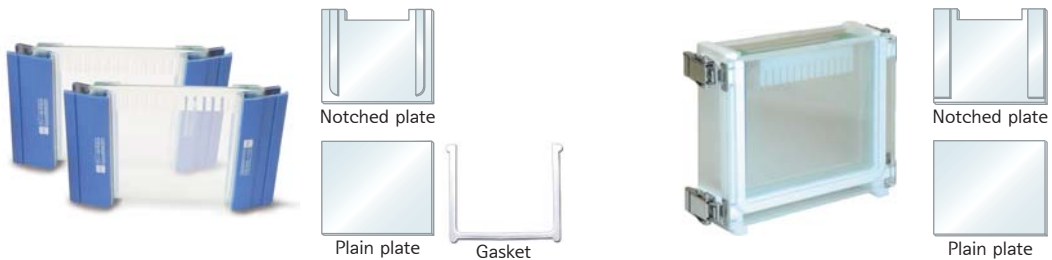


- ▷ 높은 가성비비의 전기영동장치
- ▷ AE-6401, WSE-1190 캐스터 사용 가능
- ▷ 자동 전극 스위칭 (+, -극 구분 불필요)

AE-6530 mPAGE Chamber

Gel 매수	1매, 2매
Plate size	120 (W) × 102 (H) mm, 두께 5 mm / 7 mm
Buffer volume	상부 80 mL, 하부 420 mL
크기, 중량	본체 164 (W) × 94 (D) × 154 (H) mm, 0.65 kg
구성품	Main chamber × 1 (Including leads with safety cover), Hand-cast gel holder × 2, 7 mm dummy plate × 1

Mini-Slab Size Gel Cast (8 x 9 cm)



AE-6401 1 mm Dual Mini Gel Cast

WSE-1190 Multi Mini-Slab Gel Cast

Gel size	90 (W) × 83 (H) mm, 두께 1 mm
Plate size	120 (W) × 102 (H) mm, 총 두께 7 mm
제작 매수	1~2매
구성품	Notched plate × 2, Plain plate × 2, Gasket × 2 Magnet clip × 4, 12-well comb × 2
	본체 1 set, Notched plate × 4, Plain plate × 4 Spacer × 6, Dummy plate × 1, 12-well comb × 4

Wide-Slab Size Electrophoresis System (8 x 14 cm)

WSE-1170 Multi Lane Gel Chamber

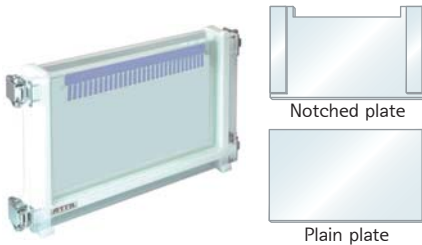


- ▷ 한 번에 60 샘플 전기영동이 가능한 Wide gel (60 samples/2 gels)
- ▷ H형 holder를 꽂기만하면 누수없이 plate 고정 완료
- ▷ Screening 등 많은 샘플 확인에 용이

WSE-1170 Multi Lane Gel Chamber

Gel 매수	1매, 2매
Gel size	140 (W) × 80 (H) mm, 두께 1 mm, 30 wells / gel
Plate size	160 (W) × 100 (H) mm, 두께 5 mm
Buffer volume	900 mL
구성품	Main chamber × 1 (Including leads with safety cover), H holder × 2, 5 mm dummy plate × 1

WSE-1195 Multi Lane Gel Cast



WSE-1195 Multi Lane Gel Cast

Gel size	140 (W) × 80 (H) mm, 두께 1 mm
Plate size	160 (W) × 100 (H) mm, 두께 5 mm
제작 매수	2매, 최대 4매 (Plate, comb 추가 시)
구성품	본체 1 set, Notched plate × 2, Plain plate × 2, Spacer × 6, Dummy plate × 1, 30-well comb × 2

Slab Size Electrophoresis System (13 x 14 cm)

AE-6220 Dual Slab Chamber



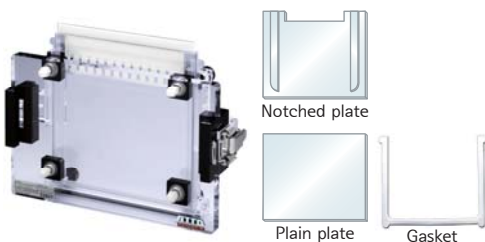
- ▷ 밴드가 많은 샘플에 적합한 대형 전기영동장치
- ▷ Midi-size gel 1~2장 전기영동 가능
- ▷ 130 × 138 mm, 두께 1 mm / 2 mm Gel

AE-6220 Dual Slab Chamber

Gel 매수	1매, 2매
Plate size	160 × 160 mm, 두께 10.5~12 mm
Buffer volume	상부 480 mL, 하부 450 mL
크기, 중량	211 (W) × 196 (D) × 205 (H) mm, 2.3 kg
구성품	Main chamber × 1 (Including leads with safety cover), Pressure platen × 2, dummy plate × 1

* Gel을 동시에 2장 전기영동할 경우, AE-6210 Slab Gel Cast 2개 필요

AE-6210 Slab Gel Cast



- ▷ 12-well, 1 Midi-size gel 제작
- ▷ 1 mm or 2 mm gel 선택
- ▷ 5 mm 두께의 견고한 Plate

AE-6210 Slab Gel Cast

Gel size	138 (W) × 130 (H) mm, 두께 1 mm or 2 mm
Plate size	160 (W) × 160 (H) mm, 총 두께 11 mm or 12 mm
제작 매수	1매
구성품	본체 1 set, Notched plate × 1, Plain plate × 1, Gasket × 1, 12-well comb × 1

Related Products



WSE-7420 EzRIPA Lysis kit

- ▷ Mammalian cell, 조직에서 단백질 추출
- ▷ Protease Inhibitor (100x, 1 mL)
- ▷ Phosphatase Inhibitor (100x, 1 mL)
- ▷ RIPA Lysis buffer (100 mL) 포함 Kit



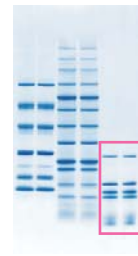
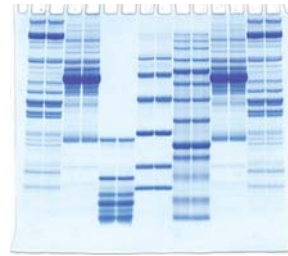
AE-1340 EzStain AQua

- ▷ PAGE gel staining solution
- ▷ Methanol, acetic acid 무첨가로 냄새 없음
- ▷ DW로 Destaining 가능
- ▷ 1x, 1L 대용량, 상온보관



e-PAGEL / e-PAGEL HR

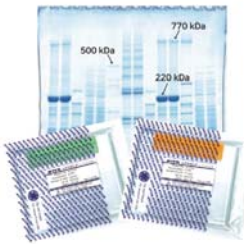
- ▷ Mini-Slab size precast gel, 10/pk
- ▷ Glass plate를 사용하여 고해상도 결과
- ▷ 14-well / gel, 18-well / gel



e-PAGEL HR
(5~20%)
300V, 30 min

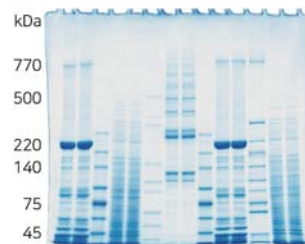


e-PAGEL
(5~20%)
20mA, 75 min

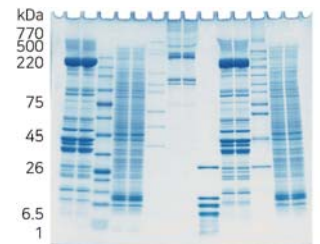


u-PAGEL H

- ▷ Mini-Slab size precast gel, 10/pk
- ▷ 고분자에 적합한 인장력 높은 Gel
- ▷ 14-well / gel, 18-well / gel



u-PAGEL H (3~10%)
300V, 40 min

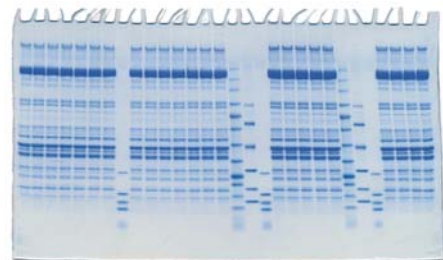


u-PAGEL H (4~20%)
300V, 35 min

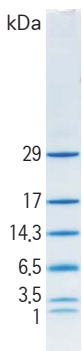


m-PAGEL

- ▷ Wide-Slab size precast gel, 6/pk
- ▷ Glass plate를 사용하여 고해상도 결과
- ▷ 5-20%, 30-well / gel



TIP! 저분자 단백질 전기영동



WSE-7025 EzStandard LMW

- ▷ 저분자 단백질용 Unstained M.W. marker
- ▷ DTT 사용으로 **고해상도, 얇고 선명한 밴드**
- ▷ 2 mL 분량 (3~5 μ L / well)



p-PAGEL

- ▷ 1~75 kDa 저분자 전용 Precast gel, 10/pk
- ▷ 16.5%, 14-well / gel, 18-well / gel



AE-1415 EzRunT

- ▷ 저분자 전용 Running buffer powder
- ▷ p-PAGEL과 함께 사용

Power Supply

WSE-3100 PowerStation Ghibli I



- ▷ 터치패널 방식의 Power supply
- ▷ 높은 범용성으로 전기영동, 트랜스퍼, IEF 모두 가능
- ▷ 쉬운 조작 및 작동
- ▷ 설정값 최대 20개 저장, 각 파일 당 9 step까지 추가 가능
- ▷ 출력값 그래프로 확인 가능

WSE-3100 PowerStation Ghibli I

출력 전류 (설정)	0~3,000 mA (10~3,000 mA)
출력 전압 (설정)	0~500 V (3~500 V)
출력 전력 (설정)	0~200 W (1~200 W)
타이머	1~999 min (카운트다운), OFF: 연속모드
출력 단자	4 ch
크기, 중량	119 (W) × 417 (D) × 224 (H) mm, 6 kg



작동 중 화면



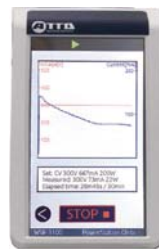
전압/전류/전력 설정



설정값 저장/불러오기



실험조건 선택하여 작동



출력값 Profile 제공



에러 표시 화면



	WSE-3400 myPower H300	AE-8155 myPower II 500	WSE-3200 Powerstation III	WSE-3500 PowerStation HC
출력 전류 (설정)	10~400 mA (10~400 mA)	0~200 mA (1~200 mA)	0~500 mA (1~500 mA)	0~3.00 A (0.01~3.00 A)
출력 전압 (설정)	10~300 V (10~300 V)	1~500 V (1~500 V)	10~1,000 V (10~1,000 V)	5~150 V (10~150 V)
출력 전력 (설정)	Max. 60 W	Max. 25 W	0~200 W (1~200 W)	0~200 W (1~200 W)
타이머	1~999 min	1~999 min	0 min: 연속모드, 1~999 min	0 min: 연속모드, 1~999 min
출력 단자	2 ch	2 ch	4 ch	4 ch
크기, 중량	140 (W) × 191 (D) × 84 (H) mm 1 kg	74 (W) × 170 (D) × 170 (H) mm 0.74 kg	96 (W) × 325 (D) × 195 (H) mm 4 kg	96 (W) × 325 (D) × 195 (H) mm 4 kg

Application

	WSE-3400 myPower H300	AE-8155 myPower II 500	WSE-3200 Powerstation III	WSE-3500 PowerStation HC	WSE-3100 PowerStation Ghibli I
PAGE gel (10 × 10 cm 미만)	○	○	○	△	○
PAGE gel (10 × 10 cm 이상)	○	○	○	×	○
Plate IEF (10 × 10 cm 미만)	×	○	○	×	○
Agarose gel	○	△	○	△	○
Semi-dry blotting	△	×	△	○	○
Semi-dry blotting (고속)	△	×	△	○	○
Wet (Tank) blotting	△	×	×	○	○

Semi-Dry Transfer

- ▷ 최적화된 Buffer로 **Blotting 효율 상승 및 시간 단축**
- ▷ 적은 Buffer 사용량 (Wet transfer 대비 1/10)
- ▷ 별도의 Cooling 불필요 (적은 저항으로 Blotting이 가능하여 발열이 적음)
- ▷ 간편한 세척과 관리



Blotting roller



	WSE-4025 HorizeBLOT 2M	WSE-4045 HorizeBLOT 4M
Transfer size	Max. 205 (W) × 100 (D) mm (Mini-gel 2장)	Max. 205 (W) × 200 (D) mm (Mini-gel 4장)
전극간 거리	Min. 3 mm ~ Max. 15 mm (스프링에 의한 압착)	
크기, 중량	246 (W) × 145 (D) × 92 (H) mm, 1.8 kg	246 (W) × 235 (D) × 92 (H) mm, 3.0 kg
구성품	Blotting unit × 1, Power leads × 1, Blotting roller × 1	Blotting unit × 1, Power leads × 1, Blotting roller × 1

WSE-4125 PoweredBLOT 2M



- ▷ 전원일체형 Transfer 장치

WSE-4125 PoweredBLOT 2M

Transfer size	205 (W) × 100 (H) mm (Mini-gel 2장)
전극간 거리	Min. 3 mm ~ Max. 15 mm (스프링에 의한 압착)
Transfer 조건	표준: 12 V (C.V.) 고속: 24 V (C.V.) 타이머: 1~250 min
크기, 중량	본체 246 (W) × 186 (D) × 114 (H) mm, 2.1 kg
구성품	Blotting unit × 1, AC adaptor × 1, Blotting roller × 1

Pre-wet Filter paper & Membrane

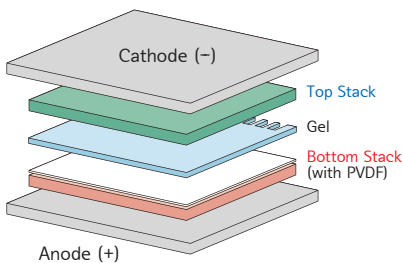
WSE-4057 QBlot kit M



- ▷ Ready-to-Use
- ▷ **최단 5분 안에 트랜스퍼 완료!**
- ▷ 기포 발생 최소화하여 Transfer 효율 최대화
- ▷ Transfer buffer, Filter paper, Membrane 준비가 필요 없음

WSE-4057 QBlot kit M

구성	Gel Wash Buffer (5×) 100 mL, Top Stack (90 × 85 mm) 10 pk, Bottom Stack (PVDF membrane 포함, 90 × 85 mm) 10 pk
보존기간	제조일로부터 1년 (냉장)
용량	10 Mini-gels 분량 / box



	Condition	Time	Output V or A
Standard	12V C.V.	15~30 min	C.V.: 0.14~0.4 A/gel
	0.25 A/gel C.C.		C.C.: 5~20V
High Speed	24V C.V.	5~10 min	C.V.: 0.5~0.8 A/gel
	0.6 A/gel C.C.		C.C.: 15~30 V

Transfer

Transfer Buffer and Consumables

AE-1465 EzFastBlot



- ▷ 150 kDa 미만 단백질 15분 안에 트랜스퍼 완료
- 5-20% 1 mm PAGE gel 기준

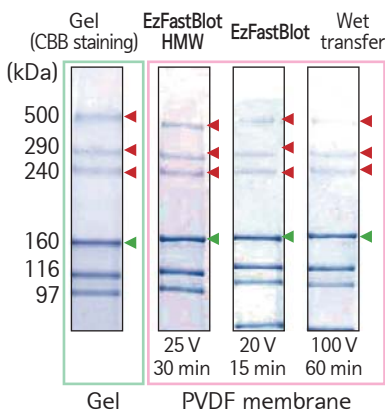
AE-1465 EzFastBlot	
용량	500 mL (10×)
조제법	DW에 10배 희석
Transfer condition	25V (C.V.) 10~15 min
보관법	실온 보관, 제조일로부터 1년간

WSE-7210 EzFastBlot HMW



- ▷ 500 kDa 미만 단백질 30분 만에 트랜스퍼 완료
- 5-20% 1 mm PAGE gel 기준

WSE-7210 EzFastBlot HMW	
용량	500 mL (5×)
조제법	DW에 5배 희석
Transfer condition	25 V (C.V.) 30~60 min
보관법	실온 보관, 제조일로부터 1년간



Blotting 시약 선택 가이드

	EzFastBlot	EzFastBlot HMW	QBlot kit
편리성	++	++	+++
Transfer 속도	++	+	+++
	10 min (25 V)	30 min (25 V)	5 min (24 V)
Transfer 효율	+++	+++	+++
고분자 단백질	+	+++	++
	~150 kDa	~500 kDa	~250 kDa

EzStack Transfer kit



- ▷ Fast transfer buffer, PVDF membrane, Filter paper, Tray 포함
- ▷ Pre-cut membrane, filter paper로 간편한 사용
- ▷ 150 kDa 이하 15분 이내 Transfer 완료
- ▷ 6.5 × 6.5 cm / 7 × 8.5 cm / 8.5 × 9 cm / 14 × 8 cm
- ▷ Gel 50장 트랜스퍼 분량
- ▷ 타사 Semi-dry Transfer 장치 호환 (호환 가능 기종 문의)

EzStackHMW Transfer kit



- ▷ Fast transfer buffer, PVDF membrane, Filter paper, Tray 포함
- ▷ Pre-cut membrane, filter paper로 간편한 사용
- ▷ 500 kDa 이하 30분 이내 Transfer 완료
- ▷ 6.5 × 6.5 cm / 7 × 8.5 cm / 8.5 × 9 cm / 14 × 8 cm
- ▷ Gel 50장 트랜스퍼 분량
- ▷ 타사 Semi-dry Transfer 장치 호환 (호환 가능 기종 문의)

Absorbent Paper



- ▷ 0.9 mm 두께로 높은 흡습성
- ▷ 고속 Transfer에 최적화
- ▷ Gel, Membrane에 맞는 다양한 크기

P Plus Membrane



- ▷ 높은 감도, 낮은 백그라운드
- ▷ 고속 Transfer에 최적화 (Pore size 0.2 μm)
- ▷ Gel, Filter paper에 맞는 다양한 크기

Ordering Information

Electrophoresis	
2322197	WSE-1165 Mini-Slab Chamber
2322198	WSE-1165 Mini-Slab with AE-6401
2322196	WSE-1165 Mini-Slab with WSE-1190
2322199	H holder, WSE-1165
2321900	AE-6530 mPAGE Chamber
2321915	AE-6530 mPAGE with AE-6401
2393726	Hand-cast Gel Holders 2/pk, AE-6530
2393731	PAGEL Holders 2/pk, AE-6530
2393720	Safety Cover including power leads, AE-6530
2393715	Lower Chamber, AE-6530
2393010	AE-6401 1mm Dual Mini Gel Cast
2398214	1mm Plate Set (Notched plate 1ea + Plain plate 1ea + gasket 1ea), AE-6401
2398230	1mm Notched Glass Plates 2/pk, AE-6401
2398232	Plain Glass Plates 2/pk, AE-6401
2398237	1mm Gaskets 3/pk, AE-6401
2398239	Clips 4/pk, AE-6401
2393031	WSE-1190 Multi Mini-Slab Gel Cast
2393035	Notched Glass plates 2/pk, WSE-1190
2393036	Plain Glass Plates 2/pk, WSE-1190
2393037	10mm Dummy plate, WSE-1190
2393038	Spacer plate 3/pk, WSE-1190
2393034	Silicon sheet 3/pk (22x103mm 2ea + 22x124mm 1ea), WSE-1190
2328375	1mm 6-well Comb, AE-6401/WSE-1190
2328376	1mm 8-well Comb, AE-6401/WSE-1190
2328948	1mm 10-well Comb, AE-6401/WSE-1190
2398269	1mm 12-well Combs 2/pk, AE-6401/WSE-1190
2398224	1mm 14-well Combs 2/pk, AE-6401/WSE-1190
2398252	1mm 18-well Combs 2/pk, AE-6401/WSE-1190
2398255	1mm 21-well Combs 2/pk, AE-6401/WSE-1190
2394160	2-D Combs 2/pk, AE-6401/WSE-1190
2398247	7mm Dummy Plate, AE-6530
2393074	5mm Dummy Plate, AE-6530/WSE-1165
2322210	WSE-1170 Multi Lane Gel Chamber
2322211	WSE-1170 Multi Lane Gel with WSE-1195
2322215	5mm Dummy plate, WSE-1170
2322214	H holder 2/pk, WSE-1170
2393032	WSE-1195 Multi Lane Gel Cast
2398300	1mm Plate set (Notched plate 1ea + Plain plate 1ea), WSE-1195
2398301	Notched plate 2/pk, WSE-1195
2398302	Plain plate 2/pk, WSE-1195
2398303	1mm 30-well Combs 2/pk, WSE-1195

2393039	10mm Dummy plate, WSE-1195
2393040	Spacer plate 6/pk, WSE-1195
2393041	Silicone Sheet 3/pk (22x164mm 1ea + 22x103mm 2ea), WSE-1195
2392990	AE-6220 Dual Slab Chamber
2392049	Pressure Platen, AE-6220
2328441	Safety Leads including collars with screws + 1 wrench
2328796	Dummy Plate, AE-6220
2392980	AE-6210 Slab Gel Cast, 1-mm 12-well
2392981	AE-6210 Slab Gel Cast, 2-mm 12-well
2392020	1mm Plate Set (Notched plate 1ea + Plain plate 1ea + gasket 1ea), AE-6210
2392024	2mm Plate Set (Notched plate 1ea + Plain plate 1ea + gasket 1ea), AE-6210
2392029	1mm Notched Glass Plates 2/pk, AE-6210
2392030	2mm Notched Glass Plates 2/pk, AE-6210
2392031	Plain Glass Plates 2/pk, AE-6210
2392032	1mm Gaskets 3/pk, AE-6210
2392033	2mm Gaskets 3/pk, AE-6210
2392060	1mm 8-well Comb, AE-6210
2392061	1mm 12-well Comb, AE-6210
2392062	1mm 20-well Comb, AE-6210
2392063	2mm 8-well Comb, AE-6210
2392064	2mm 12-well Comb, AE-6210
2392065	2mm 20-well Comb, AE-6210

Related Products

2332336	WSE-7420 EzRIPA Lysis kit
2332370	AE-1340 EzStain Aqua
2331800	7.5% 14-well e-PAGEL 10/pk
2331810	10% 14-well e-PAGEL 10/pk
2331820	12.5% 14-well e-PAGEL 10/pk
2331830	5-20% 14-well e-PAGEL 10/pk
2331840	10-20% 14-well e-PAGEL 10/pk
2331850	15% 14-well e-PAGEL 10/pk
2331700	7.5% 18-well e-PAGEL 10/pk
2331710	10% 18-well e-PAGEL 10/pk
2331720	12.5% 18-well e-PAGEL 10/pk
2331730	5-20% 18-well e-PAGEL 10/pk
2331740	10-20% 18-well e-PAGEL 10/pk
2331750	15% 18-well e-PAGEL 10/pk
2331950	7.5% 14-well e-PAGEL HR 10/pk
2331955	10% 14-well e-PAGEL HR 10/pk
2331960	12.5% 14-well e-PAGEL HR 10/pk
2331965	15% 14-well e-PAGEL HR 10/pk
2331970	5-20% 14-well e-PAGEL HR 10/pk
2331975	10-20% 14-well e-PAGEL HR 10/pk
2332050	7.5% 18-well e-PAGEL HR 10/pk

2332055	10% 18-well e-PAGEL HR 10/pk
2332060	12.5% 18-well e-PAGEL HR 10/pk
2332065	15% 18-well e-PAGEL HR 10/pk
2332070	5-20% 18-well e-PAGEL HR 10/pk
2332075	10-20% 18-well e-PAGEL HR 10/pk
2331300	5% 14-well u-PAGEL H 10/pk
2331302	3~10% 14-well u-PAGEL H 10/pk
2331304	4~20% 14-well u-PAGEL H 10/pk
2331310	5% 18-well u-PAGEL H 10/pk
2331312	3~10% 18-well u-PAGEL H 10/pk
2331314	4~20% 18-well u-PAGEL H 10/pk
2332240	5-20% 30-well m-PAGEL 6/pk
2332348	WSE-7025 EzStandard LMW
2332260	16.5% 14-well p-PAGEL 10/pk
2332265	16.5% 18-well p-PAGEL 10/pk
2332325	AE-1415 EzRunT

Power Supply

2311130	WSE-3100 PowerStation Ghibli I
2311128	WSE-3400 myPower H300
2311187	AE-8155 myPower II 500
2311145	WSE-3200 PowerStation III
2311124	WSE-3500 PowerStation HC

Transfer

2322466	WSE-4025 HorizeBLOT 2M
2322476	WSE-4045 HorizeBLOT 4M
2322479	Blotting Roller
2322462	Power leads, HorizeBLOT
2322496	WSE-4125 PoweredBLOT 2M
2322443	WSE-4057 QBlot kit M
2332590	AE-1465 EzFastBlot
2332595	WSE-7210 EzFastBlot HMW
2333593	EzStack Transfer kit 65 x 65 mm
2334593	EzStack Transfer kit 85 x 70 mm
2332593	EzStack Transfer kit 90 x 85 mm
2335593	EzStack Transfer kit 140 x 80 mm
2333594	EzStackHMW Transfer kit 65 x 65 mm
2334594	EzStackHMW Transfer kit 85 x 70 mm
2332594	EzStackHMW Transfer kit 90 x 85 mm
2335594	EzStackHMW Transfer kit 140 x 80 mm
2322437	6.5 x 6.5cm Absorbent Paper 400/pk
2392393	8.5 x 9cm Absorbent Paper 400/pk
2322436	13 x 14cm Absorbent Paper 100/pk, 2pk
2392493	20 x 20cm Absorbent Paper 100/pk
2322450	6.5 x 6.5cm P plus Membranes 20/pk
2322451	8.5 x 9cm P plus Membranes 20/pk
2322452	13 x 14cm P plus Membranes 10/pk
2322453	26 x 300cm P plus Membrane, 1 roll

0,000 001 = 10⁻⁶ micro
 0,000 000 001 = 10⁻⁹ nano
 0,000 000 000 001 = 10⁻¹² pico
 0,000 000 000 000 001 = 10⁻¹⁵ femto
 0,000 000 000 000 000 001 = 10⁻¹⁸ atto **ATTO**



(주)아토코리아

Providing research solutions for
 Biochemistry / Molecular Biology /
 Genetic engineering development

대전광역시 유성구 복용로40번길 5-6, 102호 (복용동)

■ Tel. (042) 822-1117 ■ URL www.attokorea.co.kr
 ■ Fax. (042) 825-1116 ■ E-Mail info@attokorea.co.kr