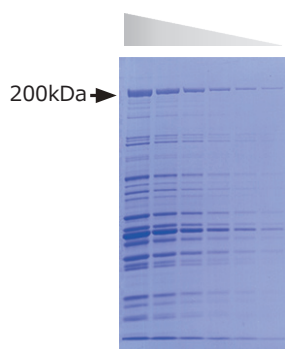


# Transfer Buffer AE-1460 EzBlot

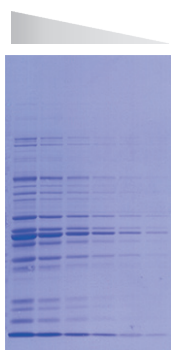


- ◎ Transfer buffer comprised of three reagent for semi-dry blotting of protein sample
- ◎ High efficient transfer buffer (refer to the below data)
- ◎ Simple preparation; Adding methanol to it only
- ◎ Attached disposable trays

## Optimized component for semi-dry blotting → High efficient transfer buffer



**EzBlot**



Tris-Glycine-MeOH solution

This transfer buffer set is optimized for semi-dry blotting<sup>※</sup> so efficiency of blotting is highly improved.

※ Refer to Kyhse-Andersen J et al., (1984) Electrophoretic transfer of proteins from polyacrylamide to nitrocellulose. *J Biochem Biophys Methods*.10:203-9

AE-1460 EzBlot has higher efficiency than Tris-Glycine-MeOH solution (refer to figures drawn on the left hand side)

Blotting buffer for wet (tank) method such as 25mM Tris, 192mM Glycine and 20% Methanol is not optimized for semi-dry method so blotting efficiency is not high.

※ Each data is membrane after blotting and dyeing with CBB stain.

Membrane: P + membranes (Pore size: 0.2μm)

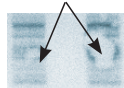
### Tips

#### Do you have a problem with "Air bubbles" ?

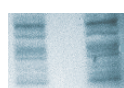


Roller for blotting  
Product code No.2322479

Nonuniformity by air bubbles



Without roller



With roller

- Air bubbles between filter, membrane and gel cause some problem such as nonuniformity at blotting.
- With a roller for blotting, it is easy to remove air bubbles efficiently.
- ATTO can provide it, so please contact us (refer to the company information below).

Product	AE-1460 EzBlot
Code	2332600
Package	4 Bottles (Solution A,C x1, Solution B x2), 40 disposable trays
Volume	Solution A: 475 mL    Solution B: 475 mL x2    Solution C: 475 mL
Use	Mix methanol with each solution
Main component	Solution A: Tris    Solution B: Tris    Solution C: Tris, 6-aminocaproic acid
Storage	at room temperature for 1 year



## ATTO Corporation

Providing research solutions for Biochemistry/Molecular Biology/  
Genetic engineering development

Head Office: 3-2-2 Motoasakusa, Taito-ku, Tokyo,  
111-0041 JAPAN

TEL: 81-3-5827-4863    FAX: 81-3-5827-6647  
Email: eig@atto.co.jp